

# ENTRON™

## iPak2v2/P-1KAWBv2/4MUX/250ET/OMS.

Available in 2 different formats.

2,3 & 4 Mux.

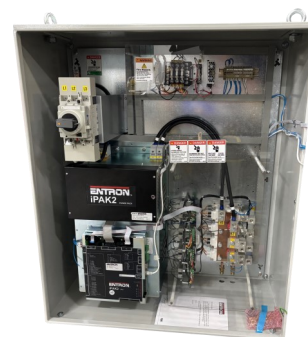
5,6,7 & 8 Mux.



Introducing the iPak2v2/P-1KAWBv2/4MUX/250ET/OMS Control.

**Built and shipped from the USA.**

The **iPAK2v2 MUX Series** is a Full Featured Mid-Frequency Weld Control built to last and can handle your Resistance Welding needs. Whether it is **SPOT** or **PROJECTION** Welding. **ENTRON CONTROLS** can provide you with a cost effective **MFDC MUX** weld control that fits your application.



2 to 4 Mux format

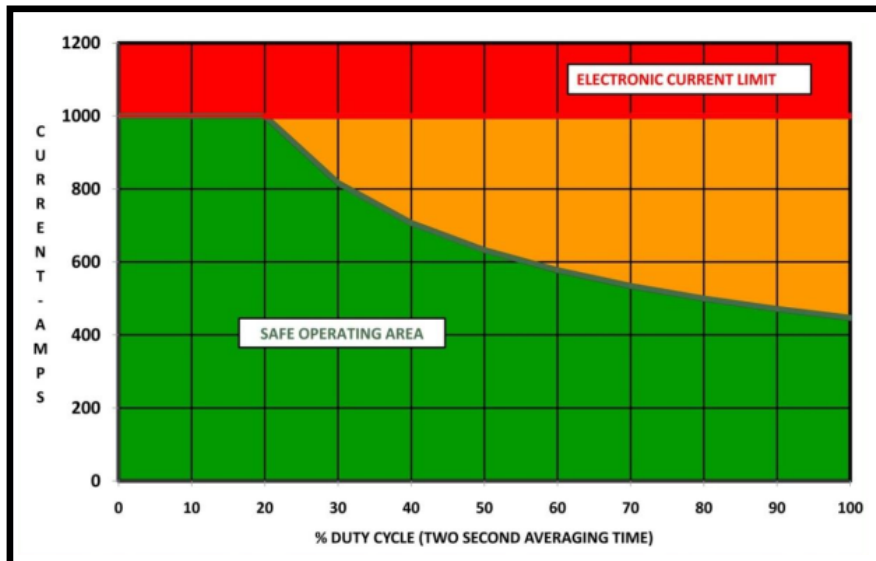
### KEY FEATURES INCLUDE:

- FLEXIBLE MUX Weld Programs.
- 3 Weld Intervals (Pre-Heat + Main Heat + Pulsation + Post Heat)
- Primary Constant Current Regulation
- Programmable force within programs w/ Analog Valve control
- Current Monitor—Force Monitor
- Conduction Monitoring for Wear or Shunting
- Up to 8 electrode calibration set-ups
- Data Logging up to 6000 records
- Ground Fault —Door interlocking breaker
- Ethernet IP— Ethernet TCP/IP (Modbus)
- RS232 and RS485 Port Connections
- Door Mounted Operation Mode Switch (program lockout switch and weld/no weld)
- 16 inputs / 16 outputs (short circuit protected and dedicated function)
- 7 Auxiliary Valves/Events access during sequence
- Forge Delay assign to available AUX Outputs
- Door mounted Ethernet/RS232 access

iPAK2v2 General Power Specifications

General Power Specifications	iPAK2v2-1000AW
Maximum output power @ 20% Duty Cycle @ 2 seconds averaging time	650 kVA @ 480 V line voltage
Maximum line input voltage	480 V ac +10% -20% @ 50/60 Hz
Maximum output current—Limited Electronically	1000 Amps
Maximum Continuous output current	447 Amps
Maximum line input current per phase	577 Amps
Continuous equivalent rms line current per phase (1000A @ 20% Duty)	258 Amps
Power Factor	Leading
Current Regulation and Feedback	Primary and Secondary
Current Regulation Accuracy	+/- 2%
Current Regulation Repeatability	+/- 1%
Inverter Switching Frequency	1kHz
Maximum Average Time	2 seconds
Water Flow Rate	10 liters per minute
Maximum inlet water temperature	25 degrees centigrade

iPAK2 1000AWb2 INVERTER RATING CURVES



**MULTIPLE PROGRAMMING OPTIONS**

Feature and programming format common with EN7000 AC control

WSP3 Handheld Pendant for local programming



NETFLASH Software for Network Connection

